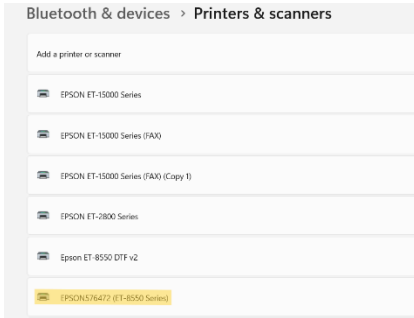
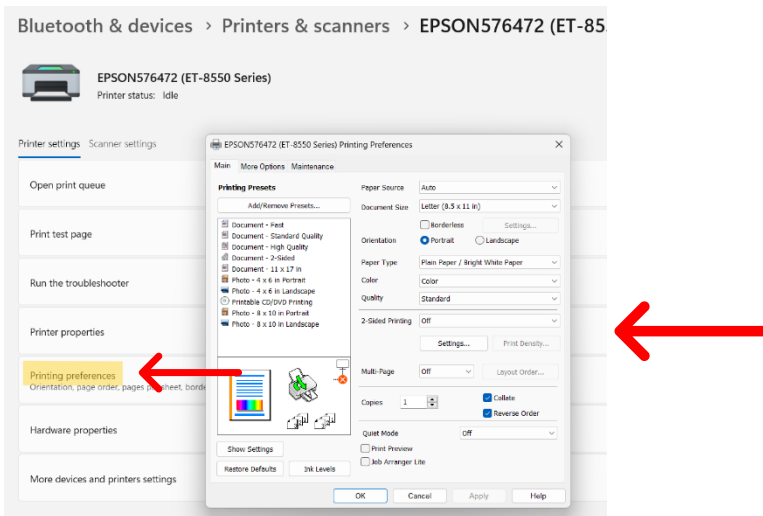


Verify/Update steps for Cadlink (Digital Factory 10 or 11) for the converted Epson ET-8550 DTF v2 printer
***THIS IS NOT FIRST INSTALL STEPS. THIS IS VERIFYING/UPDATING SETTINGS AFTER YOU HAVE ALREADY INSTALLED YOUR PRINTER ON CADLINK. IF YOU ARE INSTALLING YOUR PRINTER ON CADLINK FOR THE FIRST TIME, PLEASE SEE PDF NAMED: FIRST TIME INSTALL OF EPSON ET-8550 DTF V2 PRINTER**

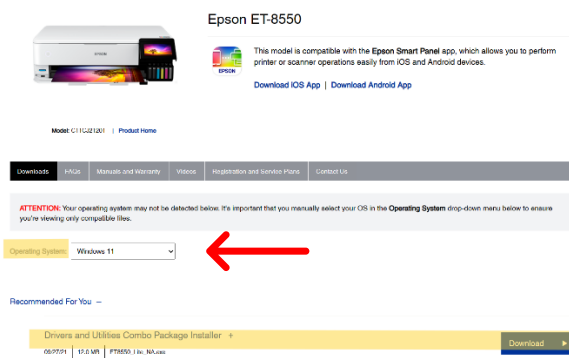
Go to your **Printers & Scanners** settings on your computer and locate your Epson 8550 printer. The correct printer will be EPSONXXXXXX (ET-8550 Series) or EPSON ET-8550 Series and will not be the one followed by DTF or DTF v2, you may have listed.



When you have located the correct ET-8550, click on it and then click on **Printing Preferences**. The following screen should look like this, if not check another 8550 printer listed.

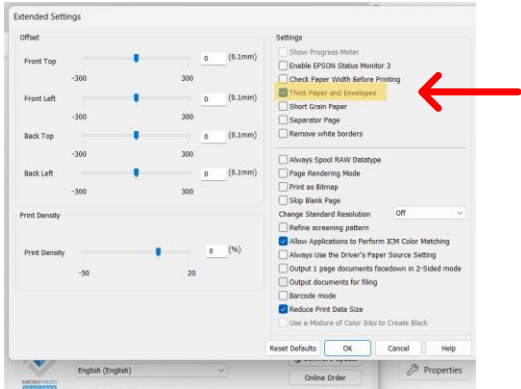


If you do not have the advanced options, as shown above, go to Epson's website at www.epson.com and under Support, click on Printers and type 8550 in search area to locate the Epson ET-8550 series, click on it and after picking **your** operating system (mine shows as Windows 11), click **GO** and download the **Drivers and Utilities Combo Package Installer**.



After downloading your driver package to your computer, locate the download, open and install the file. Once the drivers are installed, return to your **Printers & Scanners** settings, as shown in the first step.

Once in the **Printing Preferences**, click on the **Maintenance** tab and then click on **Extended Settings**. In the upper section, to the right, the only box to check should be **Thick Paper and Envelopes**.



Once the changes have been made, click **OK** and you can then exit out of those settings.

On the **actual printer**, using the LED screen, go to:

Settings

Printer settings

Paper Source setting

Paper Setup – scroll down to Rear Paper Feeder and click on it

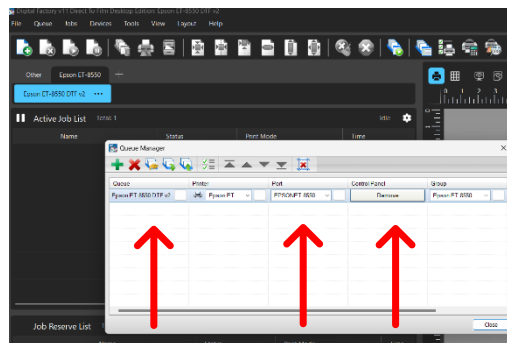
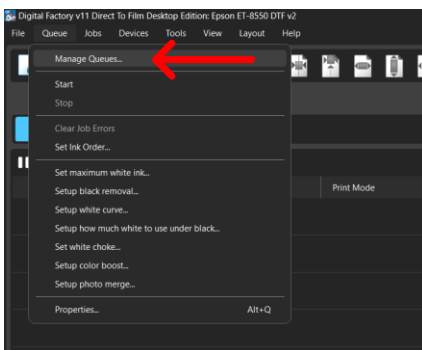
Change your **Paper Size** to match the **actual** size you are using. Look at your film packaging, if unsure of actual dimensions. (note: A3 and Super B/A3+ are not the same.) If you are unsure, measure your film, then scroll to the bottom of the list to manually enter your dimensions. **Paper Type** set to **Thin Paper**.

Click the back button 3 times to return to the **Printer Settings**. Make sure **Thick Paper** is turned **OFF**, **Quiet Mode** is turned **OFF**, **Ink Drying Time** is set to **LONGER**, and **Bidirectional** is turned **ON**.

Click the **Home** icon.

Open Digital Factory

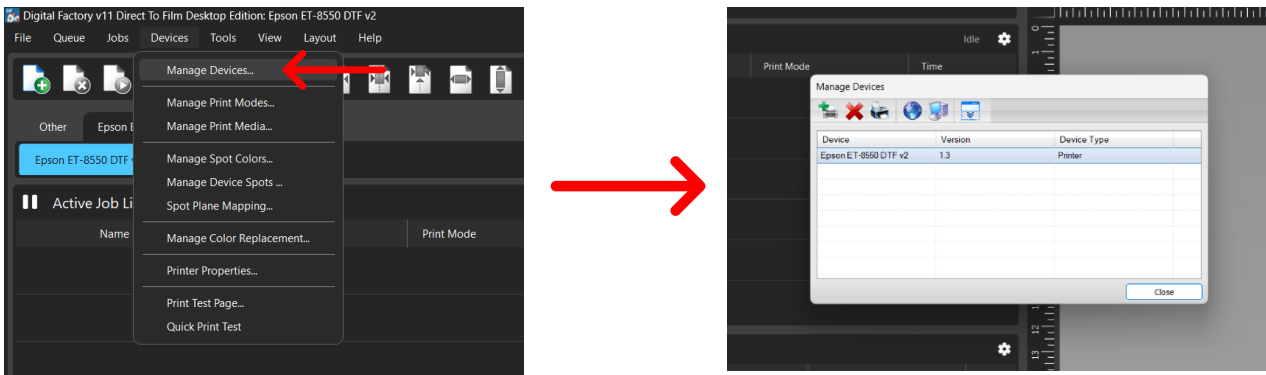
Go to **Queue** and **Manage Queues**. The only printer that should be listed/installed, if you are only using a converted Eco tank for DTF, is the **Epson ET-8550 DTF v2**.



Check your port connection. A USB connection is recommended over a TCP/IP (Wi-Fi) connection due to instability of some Wi-Fi internet. Any printer installed will give the option to **Remove**, not **Install** to the right on the port setting in the Control Panel column. If everything is correct, click **close**.

If the wrong printer is installed, click the **Remove** button, next to the **Port Setting** under the **Control Panel**, highlight the printer and click on the red **X** icon in the upper left. Do this for each incorrect printer.

If you need to locate and install the correct printer, go to **Devices** and **Manage Devices** from the pull down menu.

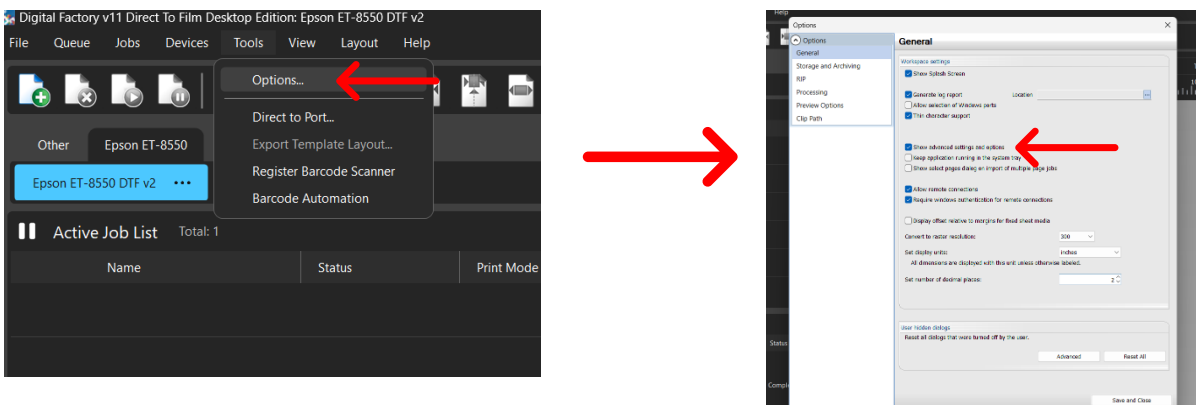


Once in the control panel shown in the top right, highlight any incorrect printers and click on the red **X** icon in the upper left to remove. Do this for each incorrect printer.

Staying in that control panel, click on the green **+** icon, locate the **Epson ET-8550 DTF v2** printer from the list and follow the prompts. A printer installation wizard should come up. If you follow all the prompts, it will install the correct printer and say install successful and you can then return to the **Queue** and **Manage Queues**, and after checking the correct settings for the updated printer, click **Install** next to the **Port Settings**, under **Control Panel**.

If you have installed the correct printer with the updated drivers, the **Epson ET-8550 DTF v2**, you will need to go back to the **Queue** drop down menu and go to **Set Ink Order** to update your ink order again.

To ensure you can access the advanced settings needed, go to **Tools** and **Options** in the pulldown menu. Once the control panel opens, go to **General** and place an **X** in the box before **Show advanced settings and options**, click **Save and Close**.



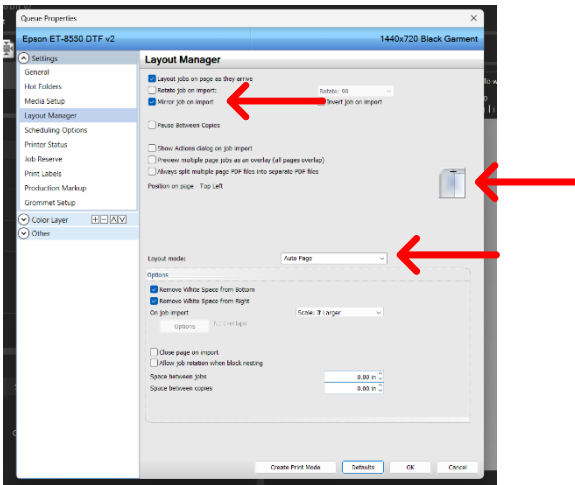
Now go to **Queue** and **Properties** and go to **Media Setup**. Choose **Fixed Sheet Media** from the pulldown menu, locate your actual size of film. If it is not listed, scroll to the top of the pulldown menu and choose **<Add New Media>** and manually enter your dimensions. You can then choose to name that new media your size and brand of film. Also, you can set your margins below.

Note: If you want to automatically avoid placing any part of your image in the bottom 2 inches of your film sheet, you can set the top, left and right margins to .25" and the bottom to 2.00" and this will automatically avoid that area when auto placing, sizing or nesting images.

If you want to print an image longer than your film sheet length, and are using a roll, the media type needs to be set to **Roll Media**. If you are using **13"** wide film roll and want to print an image that is **20"**, you will need to cut a **22"** length of film prior to your print. (I do not ever feed a full roll through my printer when using longer films). You will

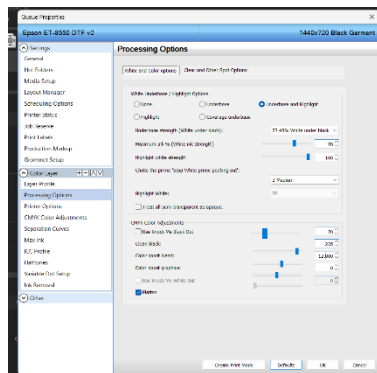
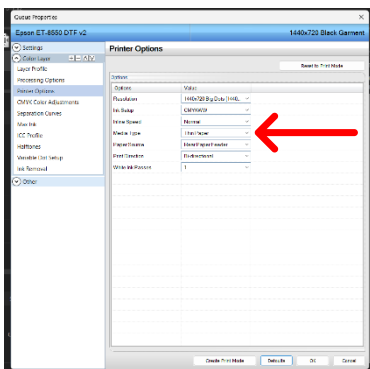
lose your bottom margin settings when choosing Roll Media. When done using a longer roll, you can return to media setup and return your settings to Fixed Sheet Media.

Under **Layout Manager**, make sure your layout settings are correct. (I use Top left design placement using Auto Page).



Under **Printer Options**, your **Ink Setup** should be **CMYKWW** (this is not your ink order, just saying you are using a 6-ink channel printer) and **Media Type** set to **Thin Paper**. **Note: This is only changing the settings for your current Queue, so you will go in and change these settings under each print mode next. Also, your Resolution, Inline Speed and Print Direction may be different than mine and your other print mode settings. The example below is my 1440x720 Black Garment setting.**

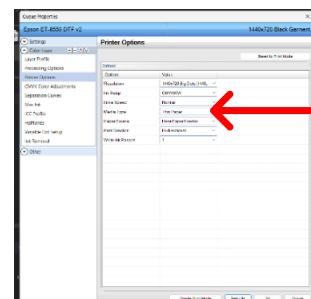
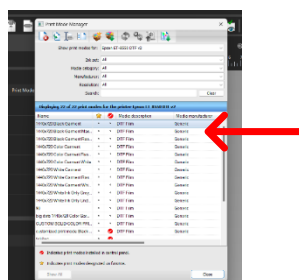
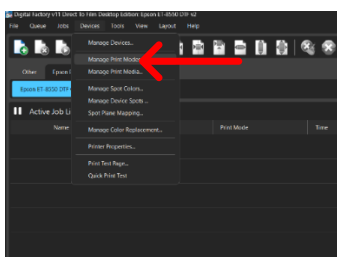
If you had to delete the incorrect printer to install the **Epson ET-8550 DTF v2** printer, you will also need to go in and update your **Underbase** and **Choke** settings to your prior settings in each print mode under the **Processing Options** tab.



Underbase and Highlight settings is a version 11 option

Once these steps are complete, go to **Devices and Manage Print Modes** in the pull-down menu.

In the lower section of the control panel, will be 12-14 of Cadlink's preset print modes and any print modes you have created on your own. Starting at the top **Print Mode**, double click on it and go down to **Color Layer** and **Printer Options**. Change the **Ink Setup** to **CMYKWW** and **Media Type** to **Thin Paper**. Click **Save** and go to the next **Print Mode** on the list. Do the same steps until all print modes are updated. **Note: This is where many run into issues after printing fine and then issues start. They may have updated settings for their current queue but when they choose a different print mode, their Printer Options are not the same and, suddenly, film jams occur again. Make sure each print mode setting is updated correctly under Printer Options.**



Once all the above steps have been completed, return to your Digital Factory, delete any jobs in your **Active List** and **Reserve List** since the above changes will only be for any new imported job. Existing Jobs will not be updated, so I recommend deleting them and re-importing for changes to take place.

I will end by saying, these are settings that work for me, and I do not need tape, nor do I have paper jams. If you are still getting paper jams and have followed all the above steps, then you can try removing your printer from Digital Factory and reinstalling again, following the steps above.